

Cattle graze
McCloud River area.
Treat river water
before drinking.

see
Algoma to Lower Falls
shuttle

see
Algoma to Cattle Camp
shuttle

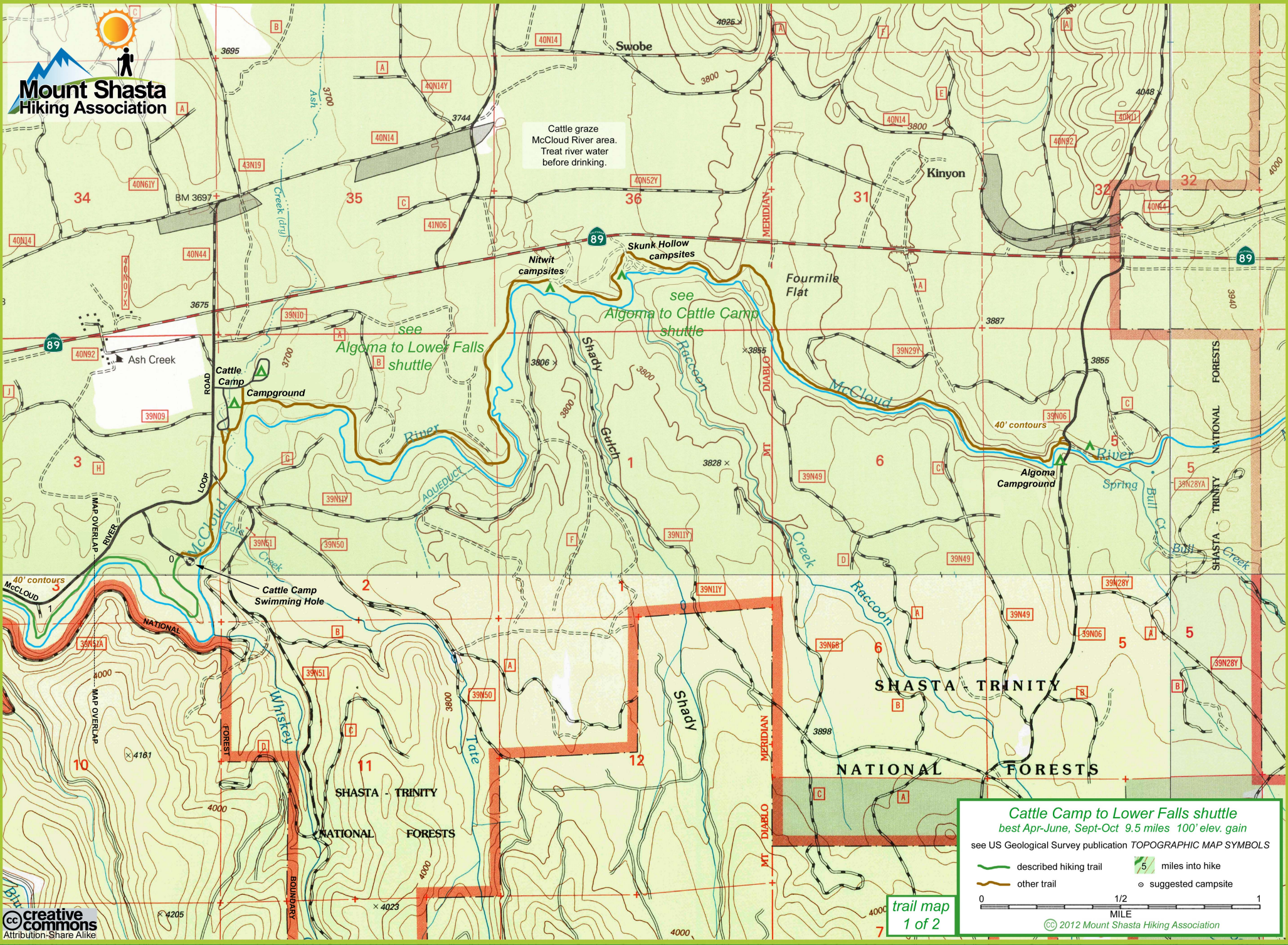
Cattle Camp to Lower Falls shuttle
 best Apr-June, Sept-Oct 9.5 miles 100' elev. gain
 see US Geological Survey publication **TOPOGRAPHIC MAP SYMBOLS**

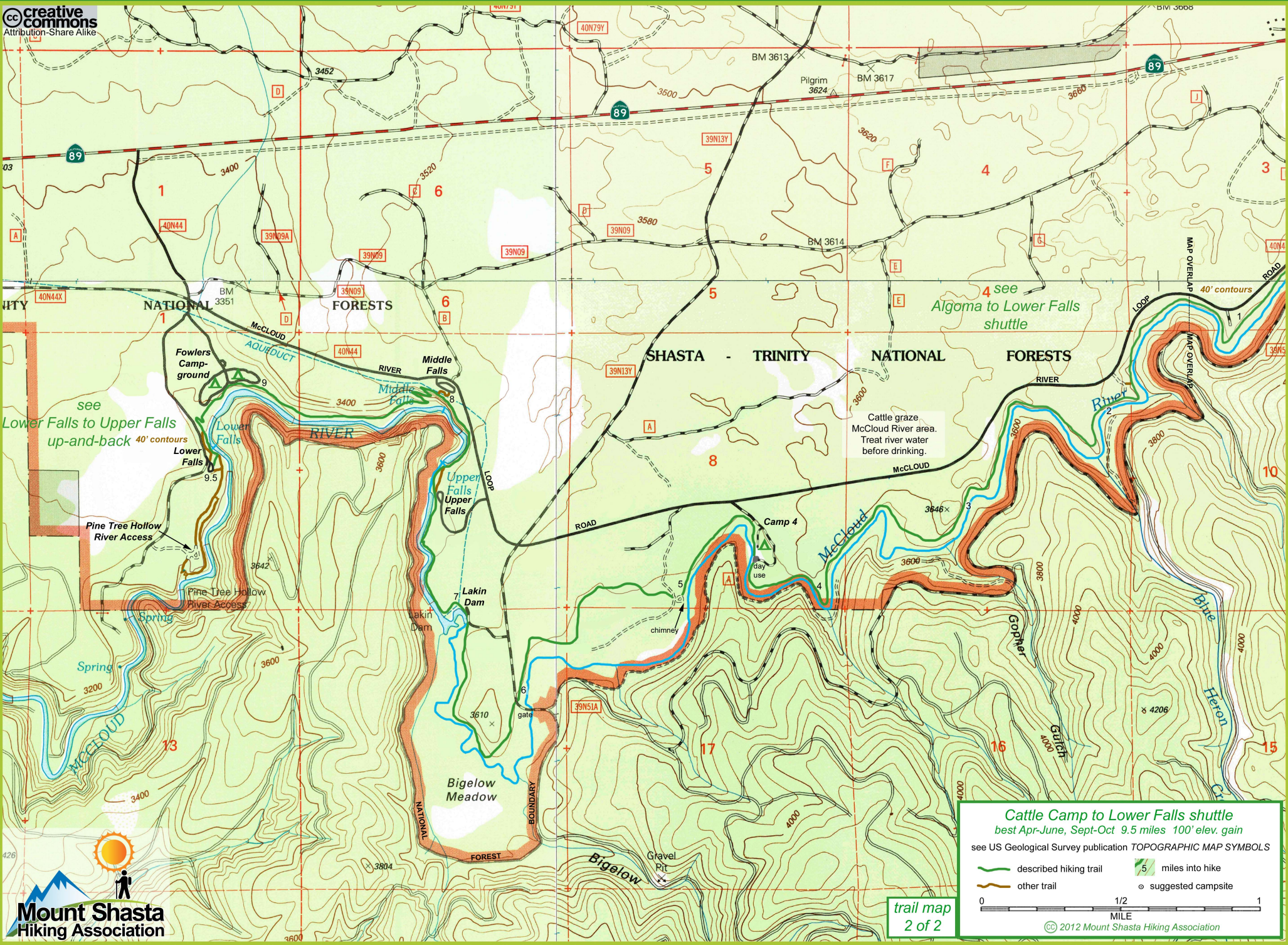
- described hiking trail
- other trail
- 5 miles into hike
- suggested campsite

0 1/2 1
MILE

© 2012 Mount Shasta Hiking Association

trail map
1 of 2





see Lower Falls to Upper Falls up-and-back 40' contours

4 see Algoma to Lower Falls shuttle

Cattle graze. McCloud River area. Treat river water before drinking.

Cattle Camp to Lower Falls shuttle
 best Apr-June, Sept-Oct 9.5 miles 100' elev. gain
 see US Geological Survey publication TOPOGRAPHIC MAP SYMBOLS

- described hiking trail
- other trail
- 5 miles into hike
- suggested campsite

0 1/2 1 MILE

© 2012 Mount Shasta Hiking Association

trail map 2 of 2

